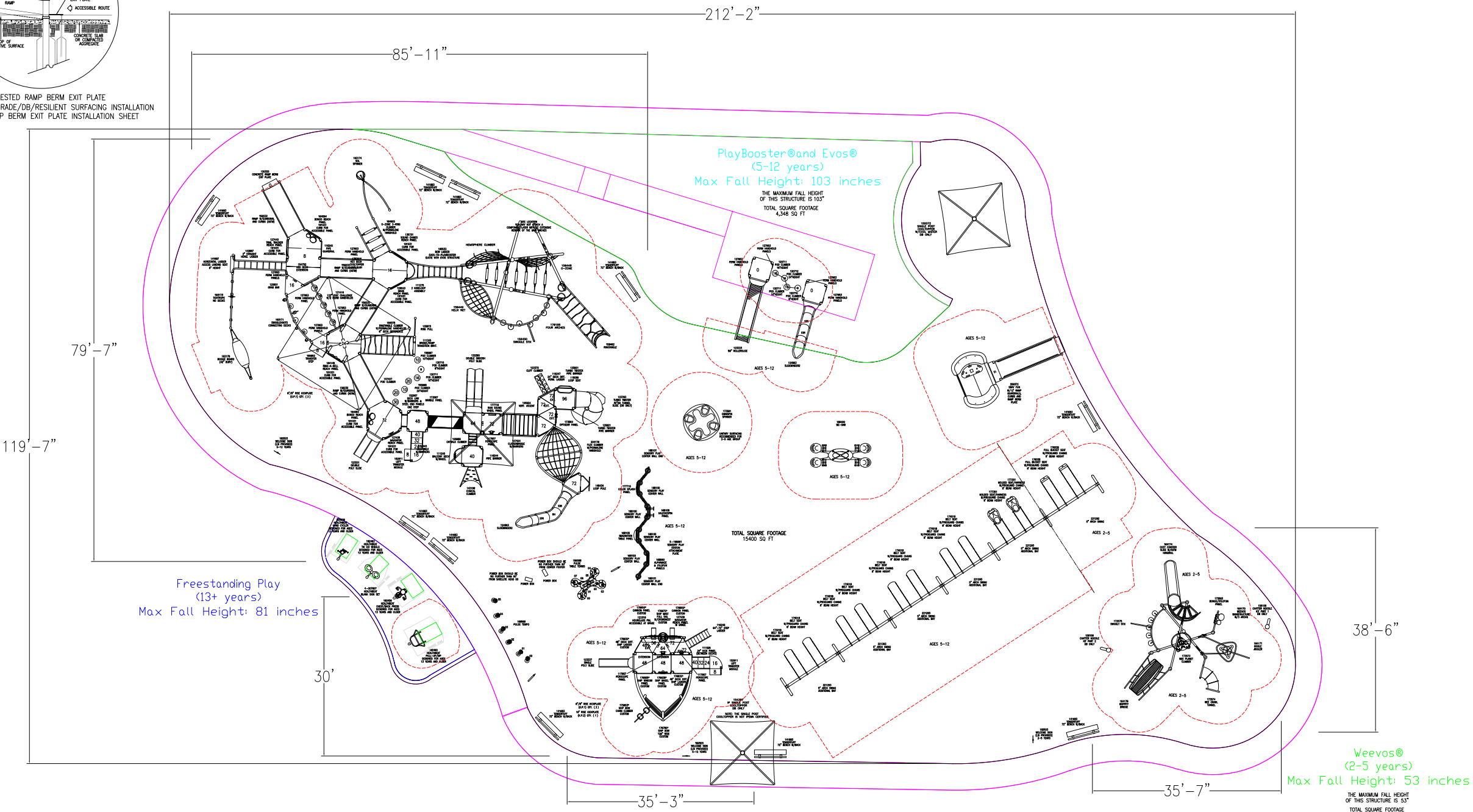


SUGGESTED RAMP BERM EXIT PLATE  
8" / 12" DECK TO GRADE / DB / RESILIENT SURFACING INSTALLATION  
REFER TO RAMP BERM EXIT PLATE INSTALLATION SHEET



212'-2"

85'-11"

79'-7"

119'-7"

Freestanding Play  
(13+ years)  
Max Fall Height: 81 inches

PlayBooster® and Evos®  
(5-12 years)  
Max Fall Height: 103 inches

THE MAXIMUM FALL HEIGHT OF THIS STRUCTURE IS 103"  
TOTAL SQUARE FOOTAGE 4,348 SQ FT

TOTAL SQUARE FOOTAGE 15,400 SQ FT

Weevos®  
(2-5 years)  
Max Fall Height: 53 inches

THE MAXIMUM FALL HEIGHT OF THIS STRUCTURE IS 53"  
TOTAL SQUARE FOOTAGE 909 SQ FT

PlayBooster®  
(5-12 years)  
Max Fall Height: 72 inches

THE MAXIMUM FALL HEIGHT OF THIS STRUCTURE IS 72"  
TOTAL SQUARE FOOTAGE 742 SQ FT

Estimated manufacturing time:  
8 weeks from the time of  
LSI order acceptance, or receipt of  
SkyWay's release of fabrication  
form if applicable.

2-5 AREA

TOTAL ELEVATED PLAY COMPONENTS	0	REQUIRED	0
TOTAL ELEVATED COMPONENTS ACCESSIBLE BY RAMP	0	REQUIRED	0
TOTAL ELEVATED COMPONENTS ACCESSIBLE BY TRANSFER	0	REQUIRED	0
TOTAL ACCESSIBLE GROUND LEVEL COMPONENTS SHOWN	8	REQUIRED	0
TOTAL DIFFERENT TYPES OF GROUND LEVEL COMPONENTS	8	REQUIRED	8

5-12 AREA

TOTAL ELEVATED PLAY COMPONENTS	38	REQUIRED	10
TOTAL ELEVATED COMPONENTS ACCESSIBLE BY RAMP	14	REQUIRED	10
TOTAL ELEVATED COMPONENTS ACCESSIBLE BY TRANSFER	19	REQUIRED	10
TOTAL ACCESSIBLE GROUND LEVEL COMPONENTS SHOWN	36	REQUIRED	13
TOTAL DIFFERENT TYPES OF GROUND LEVEL COMPONENTS	14	REQUIRED	14

landscape structures



The play components identified on this plan are IPEMA certified. (Unless model number is preceded with \*) The use and layout of these components conform to the requirements of ASTM F1487. To verify product certification, visit [www.ipema.org](http://www.ipema.org)

THIS PLAY AREA & PLAY EQUIPMENT IS DESIGNED FOR AGES 2-12 YEARS UNLESS OTHERWISE NOTED ON PLAN.

IT IS THE MANUFACTURERS OPINION THAT THIS PLAY AREA DOES CONFORM TO THE A.D.A. ACCESSIBILITY STANDARDS, ASSUMING AN ACCESSIBLE PROTECTIVE SURFACING IS PROVIDED, AS INDICATED, OR WITHIN THE ENTIRE USE ZONE.

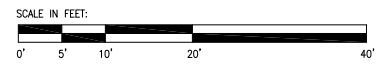
THIS CONCEPTUAL PLAN WAS BASED ON INFORMATION AVAILABLE TO US. PRIOR TO CONSTRUCTION, DETAILED SITE INFORMATION INCLUDING SITE DIMENSIONS, TOPOGRAPHY, EXISTING UTILITIES, SOIL CONDITIONS, AND DRAINAGE SOLUTIONS SHOULD BE OBTAINED, EVALUATED, & UTILIZED IN THE FINAL DESIGN. PLEASE VERIFY ALL DIMENSIONS OF PLAY AREA, SIZE, ORIENTATION, AND LOCATION OF ALL EXISTING UTILITIES, EQUIPMENT, AND SITE FURNISHINGS PRIOR TO ORDERING. SLIDES SHOULD NOT FACE THE HOT AFTERNOON SUN.

CHOOSE A PROTECTIVE SURFACING MATERIAL THAT HAS A CRITICAL HEIGHT VALUE TO MEET THE MAXIMUM FALL HEIGHT FOR THE EQUIPMENT (REF. ASTM F1487 STANDARD CONSUMER SAFETY PERFORMANCE SPECIFICATION FOR PLAYGROUND EQUIPMENT FOR PUBLIC USE, SECTION 8 CURRENT REVISION). THE SUBSURFACE MUST BE WELL DRAINED. IF THE SOIL DOES NOT DRAIN NATURALLY IT MUST BE TILED OR SLOPED 1/8" TO 1/4" PER FOOT TO A STORM SEWER OR A "FRENCH DRAIN".

DESIGNED BY:

COPYRIGHT: 10/7/21  
LANDSCAPE STRUCTURES, INC.  
601 7th STREET SOUTH - P.O. BOX 198  
DELANO, MINNESOTA 55328  
PH: 1-800-328-0035 FAX: 1-763-972-6091

Date Previous Drawing # Initials



Noah's Playground

Landscape Structures

SYSTEM TYPE:  
PlayBooster/ Evos

DRAWING #:  
1158026-01-01

