



The play components identified on this plan are IPEMA certified. (Unless model number is preceded with \*) The use and layout of these components conform to the requirements of ASTM F1487. To verify product certification, visit [www.ipema.org](http://www.ipema.org)

THIS PLAY AREA & EQUIPMENT IS DESIGNED FOR AGES 2-12 YEARS UNLESS OTHERWISE NOTED ON PLAN.

IT IS THE MANUFACTURERS OPINION THAT THIS PLAY AREA DOES CONFORM TO THE A.D.A. ACCESSIBILITY STANDARDS, ASSUMING AN ACCESSIBLE PROTECTIVE SURFACING IS PROVIDED, AS INDICATED, OR WITHIN THE ENTIRE USE ZONE.

THIS CONCEPTUAL PLAN WAS BASED ON INFORMATION AVAILABLE TO US. PRIOR TO CONSTRUCTION, DETAILED SITE INFORMATION INCLUDING SITE DIMENSIONS, TOPOGRAPHY EXISTING UTILITIES, SOIL CONDITIONS, AND DRAINAGE SOLUTIONS SHOULD BE OBTAINED, EVALUATED, & UTILIZED IN THE FINAL DESIGN. PLEASE VERIFY ALL DIMENSIONS OF PLAY AREA, SIZE, ORIENTATION, AND LOCATION OF ALL EXISTING UTILITIES, EQUIPMENT, AND SITE FURNISHINGS PRIOR TO ORDERING. SLIDES SHOULD NOT FACE THE HOT AFTERNOON SUN.

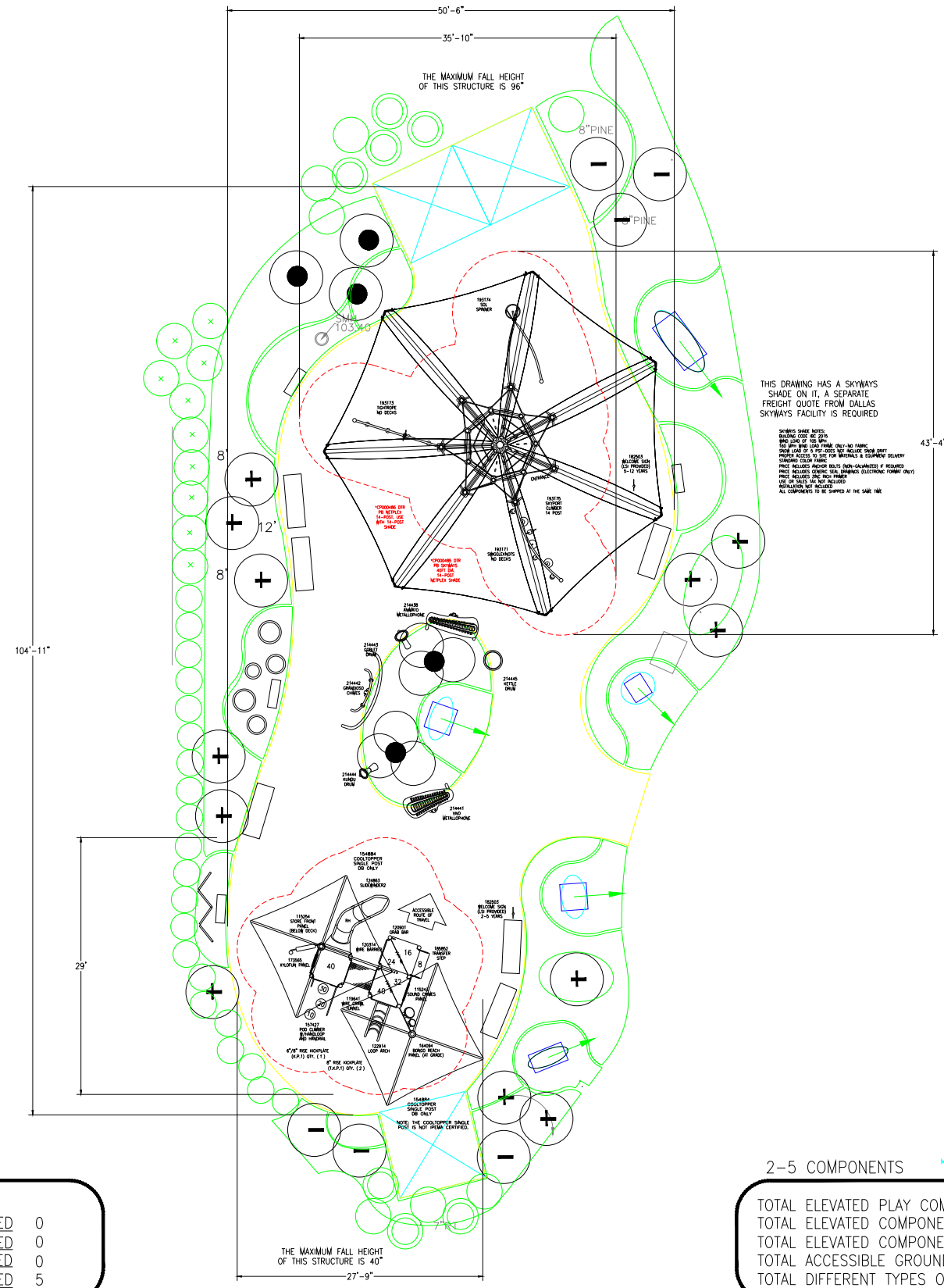
CHOOSE A PROTECTIVE SURFACING MATERIAL THAT HAS A CRITICAL HEIGHT VALUE TO MEET THE MAXIMUM FALL HEIGHT FOR THE EQUIPMENT (REF. ASTM F1487 STANDARD CONSUMER SAFETY PERFORMANCE SPECIFICATION FOR PLAYGROUND EQUIPMENT FOR PUBLIC USE, SECTION 8 CURRENT REVISION).

ACCESSIBLE/PROTECTIVE SURFACING TO BE A COMBINATION OF UNITARY AND LOOSE FILL MATERIALS.

DESIGNED BY:

COPYRIGHT: 3/23/22  
 LANDSCAPE STRUCTURES, INC.  
 601 7th STREET SOUTH - P.O. BOX 198  
 DELANO, MINNESOTA 55328  
 PH: 1-800-328-0035 FAX: 1-763-972-6091

Date	Previous Drawing #	Initials



THIS DRAWING HAS A SKYWAYS SHADE ON IT, A SEPARATE FREIGHT QUOTE FROM DALLAS SKYWAYS FACILITY IS REQUIRED

SKYWAYS SHADE NOTE:  
 BASELINE COST OF SKYWAYS SHADE IS \$1.50 PER SQUARE FOOT. THIS DRAWING IS FOR INFORMATION ONLY. ALL PRICES ARE SUBJECT TO CHANGE WITHOUT NOTICE. SKYWAYS SHADE IS NOT INCLUDED IN THIS QUOTE. ACCESS TO SKYWAYS SHADE IS REQUIRED. SKYWAYS SHADE IS NOT INCLUDED IN THIS QUOTE. ACCESS TO SKYWAYS SHADE IS REQUIRED. SKYWAYS SHADE IS NOT INCLUDED IN THIS QUOTE. ACCESS TO SKYWAYS SHADE IS REQUIRED.

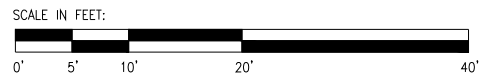
THE MAXIMUM FALL HEIGHT OF THIS STRUCTURE IS 40"

5-12 COMPONENTS  
 PlayBooster® (5-12 years)  
 Max Fall Height: 96 inches  
 Estimated manufacturing time: 6 weeks from the time of LSI order acceptance, or receipt of SkyWays release of fabrication form if applicable.

TOTAL ELEVATED PLAY COMPONENTS	0	REQUIRED	0
TOTAL ELEVATED COMPONENTS ACCESSIBLE BY RAMP	0	REQUIRED	0
TOTAL ELEVATED COMPONENTS ACCESSIBLE BY TRANSFER	0	REQUIRED	0
TOTAL ACCESSIBLE GROUND LEVEL COMPONENTS SHOWN	5	REQUIRED	0
TOTAL DIFFERENT TYPES OF GROUND LEVEL COMPONENTS	5	REQUIRED	5

2-5 COMPONENTS  
 PlayBooster® (2-5 years)  
 Max Fall Height: 40 inches

TOTAL ELEVATED PLAY COMPONENTS	6	REQUIRED	0
TOTAL ELEVATED COMPONENTS ACCESSIBLE BY RAMP	0	REQUIRED	0
TOTAL ELEVATED COMPONENTS ACCESSIBLE BY TRANSFER	6	REQUIRED	3
TOTAL ACCESSIBLE GROUND LEVEL COMPONENTS SHOWN	2	REQUIRED	2
TOTAL DIFFERENT TYPES OF GROUND LEVEL COMPONENTS	2	REQUIRED	2



Epcot Flower and Garden Festival 2016

Landscape Structures

SYSTEM TYPE:  
 PlayBooster

DRAWING #:  
 1163417-01-01

