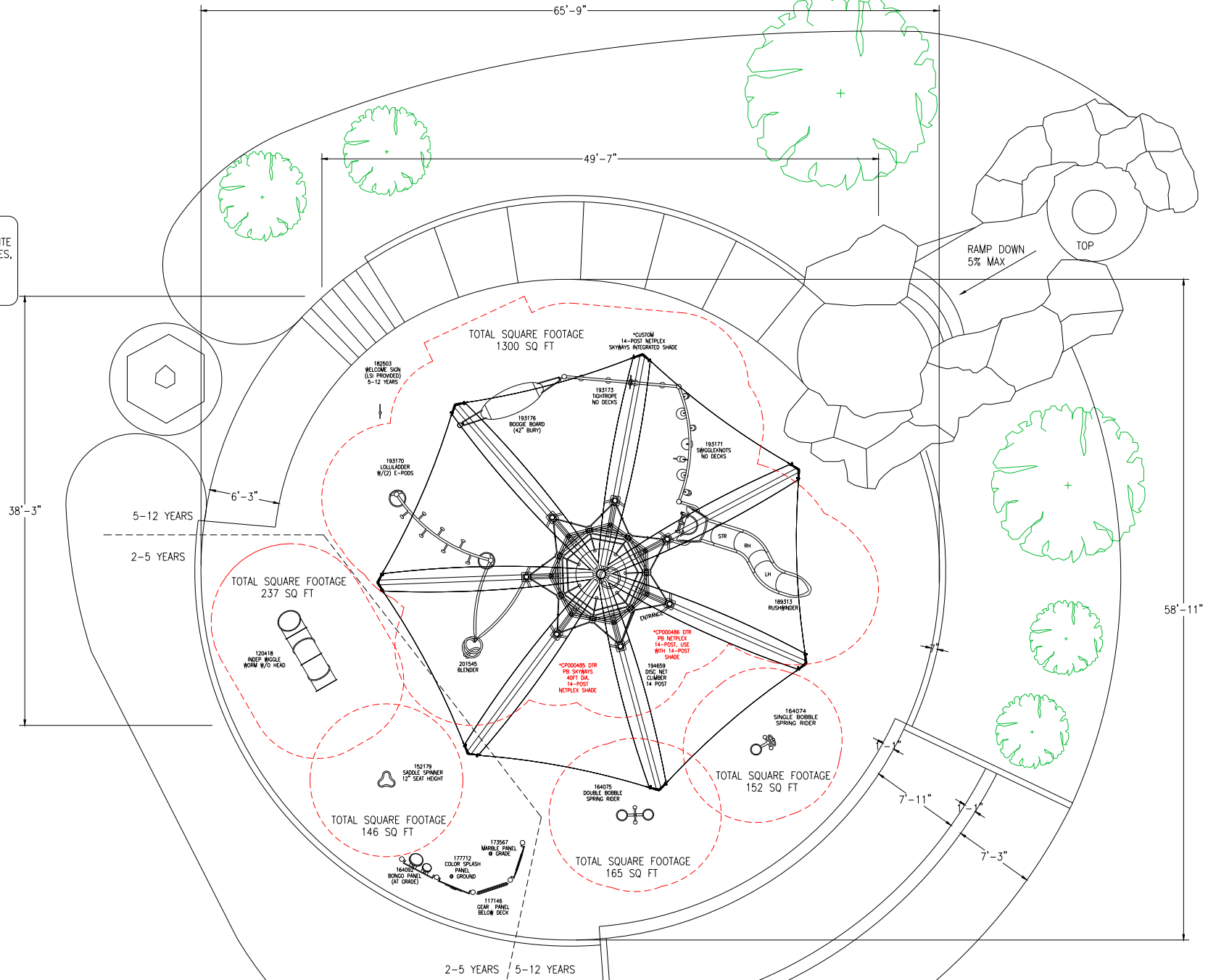


\*NOTE: PLEASE VERIFY ALL DIMENSIONS OF PLAY AREA, SIZE, ORIENTATION, AND LOCATIONS OF ALL EXISTING UTILITIES, EQUIPMENT, AND SITE FURNISHINGS PRIOR TO ORDERING. SLIDES SHOULD NOT FACE THE HOT AFTERNOON SUN.

\*OVERHEAD OBSTRUCTIONS WITHIN USE ZONES OF PLAYGROUND EQUIPMENT THAT ARE NOT PART OF THE PLAY STRUCTURE (FOR EXAMPLE, TREE LIMBS) SHALL BE AT LEAST 84 IN. (2130mm) ABOVE EACH DESIGNATED PLAY SURFACE OR 84 IN. (2130mm) ABOVE THE PIVOT POINT OF SWINGS.

THIS CONCEPTUAL PLAN WAS BASED ON INFORMATION AVAILABLE TO US. PRIOR TO CONSTRUCTION, DETAILED SITE INFORMATION CONCERNING TOPOGRAPHY, EXISTING UTILITIES, SOIL CONDITIONS, AND DRAINAGE SOLUTIONS SHOULD BE OBTAINED, EVALUATED AND UTILIZED IN THE FINAL DESIGN DEVELOPMENT.



SKYWAYS SHADE NOTES:  
 BUILDING CODE IBC 2015  
 WIND LOAD OF 105 MPH  
 160 MPH WIND LOAD FRAME ONLY-NO FABRIC  
 SNOW LOAD OF 5 PSF-DOES NOT INCLUDE SNOW DRIFT  
 PROPER ACCESS TO SITE FOR MATERIALS & EQUIPMENT DELIVERY  
 STANDARD COLOR FABRIC  
 PRICE INCLUDES ANCHOR BOLTS (NON-GALVANIZED) IF REQUIRED  
 PRICE INCLUDES GENERIC SEAL DRAWINGS (ELECTRONIC FORMAT ONLY)  
 PRICE INCLUDES ZINC RICH PRIMER  
 USE OR SALES TAX NOT INCLUDED  
 INSTALLATION NOT INCLUDED  
 ALL COMPONENTS TO BE SHIPPED AT THE SAME TIME

THIS DRAWING HAS A SKYWAYS SHADE ON IT, A SEPARATE FREIGHT QUOTE FROM DALLAS SKYWAYS FACILITY IS REQUIRED

Estimated manufacturing time: 6 weeks from the time of LSI order acceptance, or receipt of SkyWays release of fabrication form if applicable.

PlayBooster® (5-12 years)  
 5-12 YEARS Max Fall Height: 96 inches

PlayBooster® (2-5 years)  
 2-5 YEARS Max Fall Height: 18 inches

TOTAL ELEVATED PLAY COMPONENTS	0		
TOTAL ELEVATED COMPONENTS ACCESSIBLE BY RAMP	0	REQUIRED	0
TOTAL ELEVATED COMPONENTS ACCESSIBLE BY TRANSFER	0	REQUIRED	0
TOTAL ACCESSIBLE GROUND LEVEL COMPONENTS SHOWN	9	REQUIRED	0
TOTAL DIFFERENT TYPES OF GROUND LEVEL COMPONENTS	8	REQUIRED	8

TOTAL ELEVATED PLAY COMPONENTS	0		
TOTAL ELEVATED COMPONENTS ACCESSIBLE BY RAMP	0	REQUIRED	0
TOTAL ELEVATED COMPONENTS ACCESSIBLE BY TRANSFER	0	REQUIRED	0
TOTAL ACCESSIBLE GROUND LEVEL COMPONENTS SHOWN	6	REQUIRED	0
TOTAL DIFFERENT TYPES OF GROUND LEVEL COMPONENTS	6	REQUIRED	6

The play components identified on this plan are IRMA certified. (Unless model number is preceded with \*) The use and layout of these components conform to the requirements of ASTM F1487. To verify product certification, visit [www.ipema.org](http://www.ipema.org)

---

THIS PLAY AREA & PLAY EQUIPMENT IS DESIGNED FOR AGES 5-12 YEARS UNLESS OTHERWISE NOTED ON PLAN.

---

IT IS THE MANUFACTURERS OPINION THAT THIS PLAY AREA DOES CONFORM TO THE A.D.A. ACCESSIBILITY STANDARDS, ASSUMING AN ACCESSIBLE PROTECTIVE SURFACING IS PROVIDED, AS INDICATED, OR WITHIN THE ENTIRE USE ZONE.

---

THIS CONCEPTUAL PLAN WAS BASED ON INFORMATION AVAILABLE TO US. PRIOR TO CONSTRUCTION, DETAILED SITE INFORMATION INCLUDING SITE DIMENSIONS, TOPOGRAPHY, EXISTING UTILITIES, SOIL CONDITIONS, AND DRAINAGE SOLUTIONS SHOULD BE OBTAINED, EVALUATED, & UTILIZED IN THE FINAL DESIGN. PLEASE VERIFY ALL DIMENSIONS OF PLAY AREA, SIZE, ORIENTATION, AND LOCATION OF ALL EXISTING UTILITIES, EQUIPMENT, AND SITE FURNISHINGS PRIOR TO ORDERING. SLIDES SHOULD NOT FACE THE HOT AFTERNOON SUN.

---

CHOOSE A PROTECTIVE SURFACING MATERIAL THAT HAS A CRITICAL HEIGHT VALUE TO MEET THE MAXIMUM FALL HEIGHT FOR THE EQUIPMENT (REF. ASTM F1487 STANDARD CONSUMER SAFETY PERFORMANCE SPECIFICATION FOR PLAYGROUND EQUIPMENT FOR PUBLIC USE, SECTION 8 CURRENT REVISION). THE SUBSURFACE MUST BE WELL DRAINED. IF THE SOIL DOES NOT DRAIN NATURALLY IT MUST BE TILED OR SLOPED 1/8" TO 1/4" PER FOOT TO A STORM SEWER OR A "FRENCH DRAIN".

---

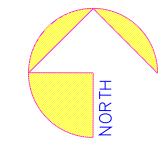
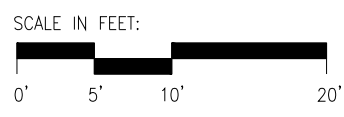
IT IS THE MANUFACTURER'S OPINION AND INTENT THAT THE LAYOUT OF THESE COMPONENTS CONFORM WITH THE U.S. CONSUMER PRODUCT SAFETY COMMISSION'S (CPSC) "HANDBOOK FOR PUBLIC PLAYGROUND SAFETY".

---

DESIGNED BY:

COPYRIGHT: 10/18/2021  
 LANDSCAPE STRUCTURES, INC.  
 601 7th STREET SOUTH - P.O. BOX 198  
 DELANO, MINNESOTA 55328  
 PH: 1-800-328-0035 FAX: 1-763-972-6091

Date	Previous Drawing #	Initials



Rolling Hills County Park

Landscape Structures

SYSTEM TYPE:  
 PlayBooster

DRAWING #:  
 1158321-01-01

