

## SIGN DATA

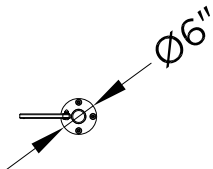
DigiFuse Sign displays Splash Pad information such as safety or use specifications.

Post can be located in dry or wet area.

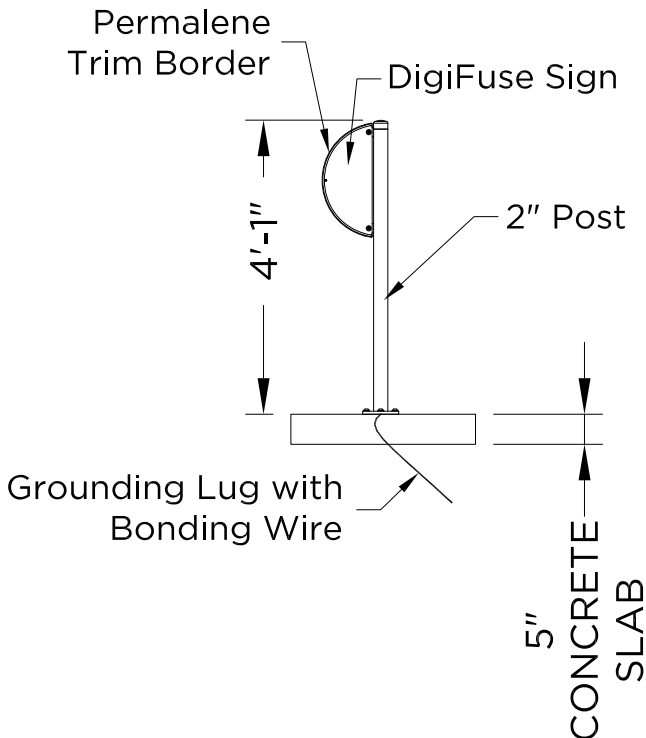
Place post where easily visible. It is recommended to place at common entry point to Splash Pad.

The post must be bonded and grounded.

## TOP VIEW



## SIDE VIEW



\*\*Not for Construction\*\*

## PRODUCT MATERIALS

### Structure:

Stainless Steel Fabrication.  
(see specification for details)

DigiFused Aluminum Sign  
(see specification for details)

Permalene Trim Border  
(see specification for details)



1101 McKinley Parkway  
Delano, MN 55328  
877-632-0503  
Local 952-445-5135  
aquatix.playlsi.com

## SPLASH PAD SIGN

KMR  
DRAWN BY

3/8"=1'-0"  
SCALE

1/31/2024  
DATE

This drawing is issued in confidence for engineering information only. This drawing shall remain the property of Aquatix and may not be reproduced, disclosed to a third party, or used to manufacture anything without direct written permission from Aquatix. Unauthorized use shall entitle Aquatix to all damages caused by such user including preparation charges, lost profits, damage to reputation and attorney's fees.