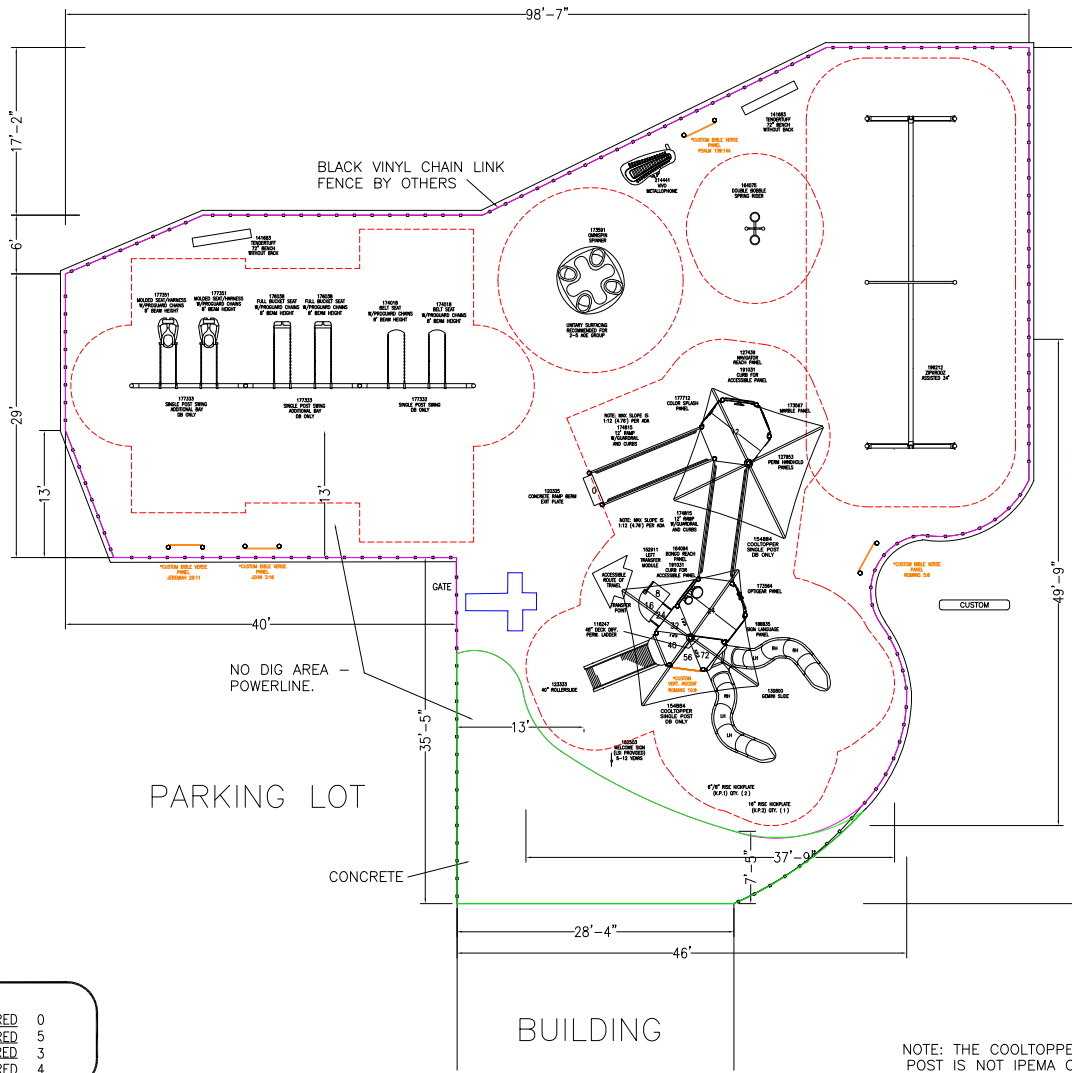
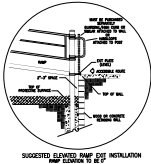


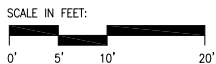
NOTE:  
SITE EXPANSION MAY BE REQUIRED.  
PLEASE VERIFY ALL SITE INFORMATION  
PRIOR TO ANY CONSTRUCTION, TO INSURE  
THAT ADEQUATE SPACE IS PROVIDED TO  
ACCOMMODATE SAFETY-ZONES.



Estimated manufacturing time:  
6 weeks from the  
time of LSI order acceptance.

PlayBooster®  
(5-12 years)  
Max Fall Height: 105 inches

|  |    |          |   |
|--|----|----------|---|
| TOTAL ELEVATED PLAY COMPONENTS                   | 10 |          |   |
| TOTAL ELEVATED COMPONENTS ACCESSIBLE BY RAMP     | 6  | REQUIRED | 0 |
| TOTAL ELEVATED COMPONENTS ACCESSIBLE BY TRANSFER | 8  | REQUIRED | 5 |
| TOTAL ACCESSIBLE GROUND LEVEL COMPONENTS SHOWN   | 9  | REQUIRED | 3 |
| TOTAL DIFFERENT TYPES OF GROUND LEVEL COMPONENTS | 4  | REQUIRED | 4 |



Fairplains Baptist Church  
North Wilkesboro, NC

Carolina Parks  
and Play, LLC

SYSTEM TYPE:  
PlayBooster

DRAWING #:  
100517-1-3



IT IS THE MANUFACTURERS OPINION AND INTENT THAT THE USE AND LAYOUT OF THESE COMPONENTS CONFORM WITH THE AMERICAN SOCIETY FOR TESTING AND MATERIALS (ASTM) STANDARD ASTM F1487

THIS PLAY AREA & PLAY EQUIPMENT IS DESIGNED FOR AGES 5-12 YEARS UNLESS OTHERWISE NOTED ON PLAN.

IT IS THE MANUFACTURERS OPINION THAT THIS PLAY AREA DOES CONFORM TO THE A.D.A. ACCESSIBILITY STANDARDS, ASSUMING AN ACCESSIBLE PROTECTIVE SURFACING IS PROVIDED, AS INDICATED, OR WITHIN THE ENTIRE USE ZONE.

THIS CONCEPTUAL PLAN WAS BASED ON INFORMATION AVAILABLE TO US, PRIOR TO CONSTRUCTION. DETAILED SITE INFORMATION INCLUDING SITE DIMENSIONS, TOPOGRAPHY, EXISTING UTILITIES, SOIL CONDITIONS, AND DRAINAGE SOLUTIONS SHOULD BE OBTAINED, EVALUATED, & UTILIZED IN THE FINAL DESIGN. PLEASE VERIFY ALL DIMENSIONS OF PLAY AREA, SIZE, ORIENTATION, AND LOCATION OF ALL EXISTING UTILITIES, EQUIPMENT, AND SITE FURNISHINGS PRIOR TO ORDERING. SLIDES SHOULD NOT FACE THE HOT AFTERNOON SUN.

CHOOSE A PROTECTIVE SURFACING MATERIAL THAT HAS A CRITICAL HEIGHT VALUE TO MEET THE MAXIMUM FALL HEIGHT FOR THE EQUIPMENT (REF. ASTM F1487 STANDARD CONSUMER SAFETY PERFORMANCE SPECIFICATION FOR PLAYGROUND EQUIPMENT FOR PUBLIC USE, SECTION 8 CURRENT REVISION). THE SUBSURFACE MUST BE WELL DRAINED IF THE SOIL DOES NOT DRAIN NATURALLY IT MUST BE TILED OR SLOPED 1/8" TO 1/4" PER FOOT TO A STORM SEWER OR A "FRENCH DRAIN".

AREA OF ACCESSIBLE/PROTECTIVE SURFACING (POURED-IN-PLACE SUGGESTED) 4999 SQ FT

DESIGNED BY:

COPYRIGHT: 3/2/17  
LANDSCAPE STRUCTURES, INC.  
601 7th STREET SOUTH - P.O. BOX 198  
ISLAND, MINNESOTA 55229  
PH: 1-800-328-0035 FAX: 1-763-972-6091

|      |                    |          |
|------|--------------------|----------|
| Date | Previous Drawing # | Initials |
|      |                    |          |

