

AVAILABLE EQPT

- FILTER PUMP
- CARTRIDGE FILTER OR SAND FILTER
- CHEMICAL CONTROLLER
- UV LIGHT AND CONTROL PANEL
- ENZYME INJECTION PUMP
- IN-LINE FLOW METER
- FEATURE PUMP
- SCH80 PVC DISTRIBUTION HEADER
- INTERIOR ROOM LIGHTS
- HOSE BIBB
- EYEWASH STATION
- STORAGE TANK VENT FAN
- UNDERWATER STORAGE TANK LIGHTS
- OVERFLOW SUMP PUMP
- DRAIN SUMP PUMP
- WATERLEVEL FLOAT VALVE
- FIRST AID KIT
- STORAGE CABINET

AVAILABLE OPTIONS

WATER TREATMENT

- SAND
- CARTRIDGE

CHEMICAL TREATMENT:

- LIQUID CHEMICAL TREATMENT
- EROSION CHEMICAL TREATMENT

FEATURE FLOW RATE:

- UP TO 500 GPM

BASIS OF DESIGN

MECHANICAL SYSTEM CAN BE UP TO 75' AWAY FROM THE FARTHEST DRAIN IF THE SPLASH PAD AND MECH20 ARE AT THE SAME ELEVATION. MECHANICAL SYSTEM DESIGNED FOR A FEATURE FLOW RATE UP TO 500 GPM. DISTRIBUTION MANIFOLD CAN HAVE UP TO (25X) 1½" SUPPLY LINES. WATER TANK WORKING VOLUME IS 3,000 GALLONS MAX.

APPROX WEIGHTS

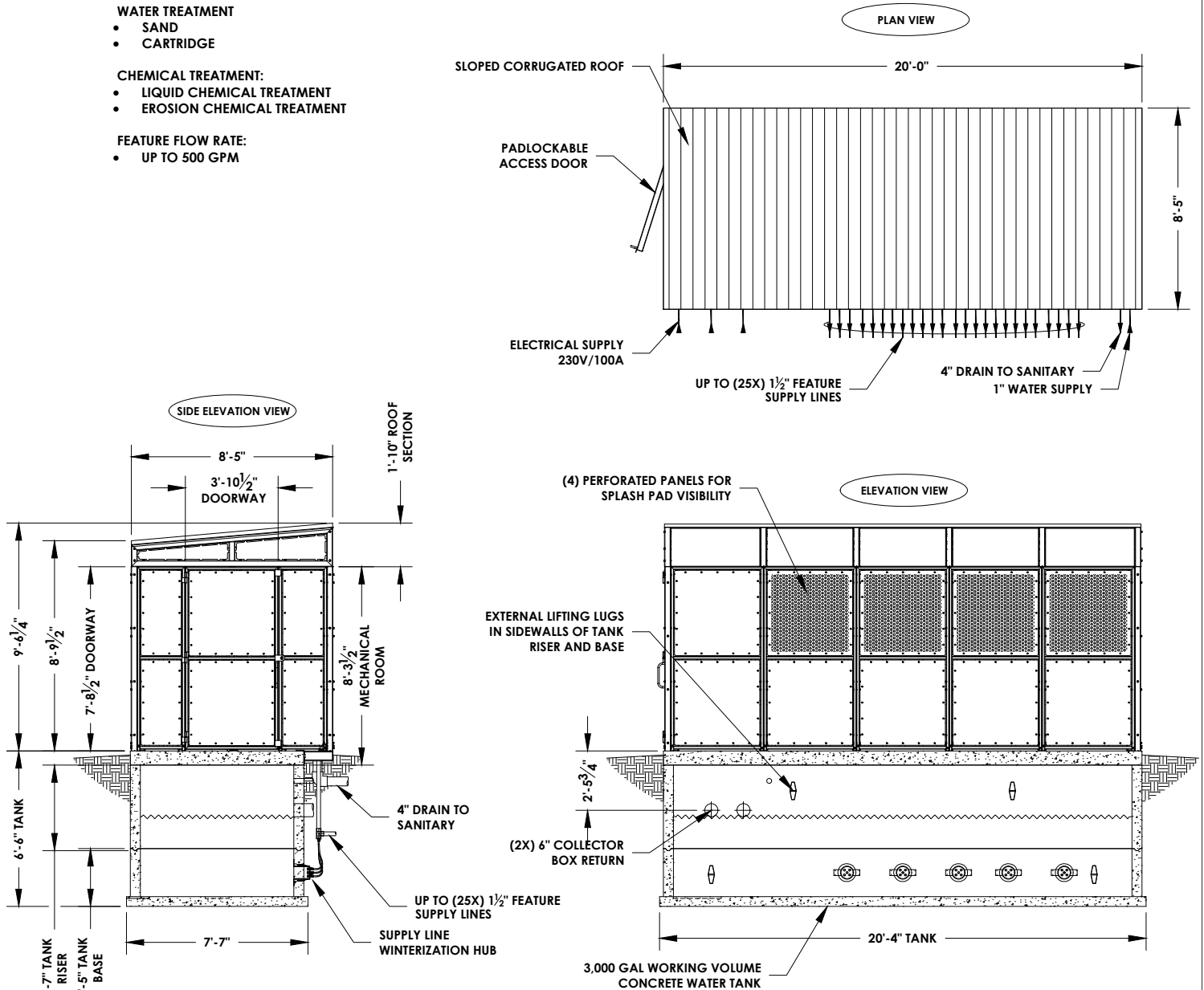
TANK BASE: 16,500lbs
TANK RISER: 12,000lbs
LID AND MECHANICAL ROOM: 16,000lbs
ROOF: 1,800lbs
APPROX TOTAL: 46,300lbs

UTILITY CONNECTIONS

ELECTRICAL: 230V/1PH/100A
WATER SUPPLY: 1" WITH BACKFLOW PREVENTER AND PSI REGULATED TO 25-30 PSI
WASTE: 4" DRAIN TO SANITARY

LOADS

-WIND: 180 MPH PER ASCE 7-16 EXPOSURE C, RISK CATEGORY II
-SEISMIC: ASCE 7-16 DESIGN CATEGORY D, SITE CLASS D
-WIND: 30 PSF LIVE LOAD
LOCAL CODES MAY VARY. CHECK WITH YOUR LOCAL BUILDING OFFICE TO SEE IF YOUR PROJECT HAS DIFFERENT REQUIREMENTS, AND TO VERIFY CONCRETE REQUIREMENTS.



*HEALTH CODE REGULATIONS APPLY. CHECK YOUR LOCAL CODES



1101 McKinley Parkway
Delano, MN 55328
888-438-6574
763-972-5200
aquatix.playlsi.com

MECH20™ GENERAL MECHANICAL SYSTEM

DRAWN BY	NCS	SCALE	1/4" = 1'-0"	DATE	11/4/25
REVISED BY	NCS	REVISION LETTER	A	REVISION DATE	11/4/25

This drawing is issued in confidence for engineering information only. This drawing shall remain the property of Aquatix and may not be reproduced, disclosed to a third party, or used to manufacture anything without direct written permission from Aquatix. Unauthorized use shall entitle Aquatix to all damages caused by such user including preparation charges, lost profits, damage to reputation and attorney's fees.