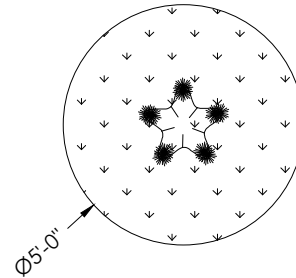


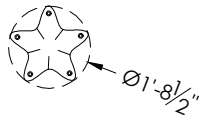
NOTES

1. Valve must be installed on supply line to regulate flow.
2. Concrete mounting surface for structure installation needs to be level and flat.
3. Supply line is based on the designated flow rates for structure.
4. Underground plumbing to be designed for winterization.
5. Consult local electrical inspector for grounding.
6. Concrete to be rated for 4000 psi minimum before installing structure. Approx. 28 days of curing to reach rate.
7. Product may require a strainer on the water feed line. Consult with manufacturer.
8. Product specifications are subject to change.

SPLASH ZONE



TOP VIEW

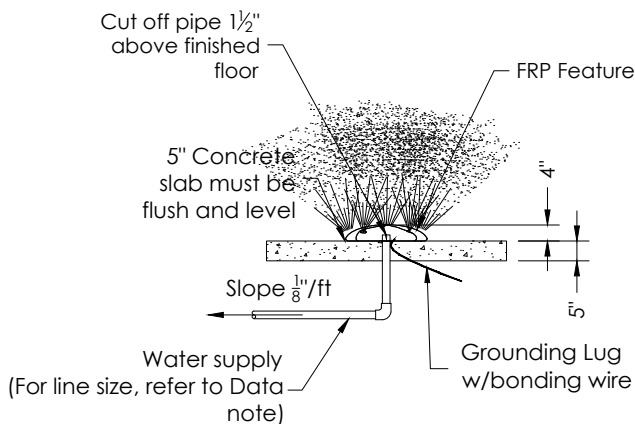


Splash Zone-Not to Scale

Splash Zone Notes:

Splash zones are approximate, actual splash may vary based on various environmental conditions, flow rates, slope of splash pad, submergence depth and wind.

FRONT VIEW



PRODUCT OPTIONS

Structure:

Fiberglass Fabrication

(see specification for details)

DATA

Flow: 6 to 12 GPM
 Pressure: 15 PSI
 Supply Line: 1 1/2" Pipe
 Installation: Bolt to Concrete

****Not for Construction****



1101 McKinley Parkway
 Delano, MN 55328
 888-438-6574
 763-972-5200
 aquatix.playlsi.com

STARMISTER SOLID

DRAWN BY JLS
 REVISED BY NCS

SCALE 1/4" = 1'-0"
 REVISION LETTER B

DATE 11/12/18
 REVISION DATE 2/4/25

This drawing is issued in confidence for engineering information only. This drawing shall remain the property of Aquatix and may not be reproduced, disclosed to a third party, or used to manufacture anything without direct written permission from Aquatix. Unauthorized use shall entitle Aquatix to all damages caused by such user including preparation charges, lost profits, damage to reputation and attorney's fees.