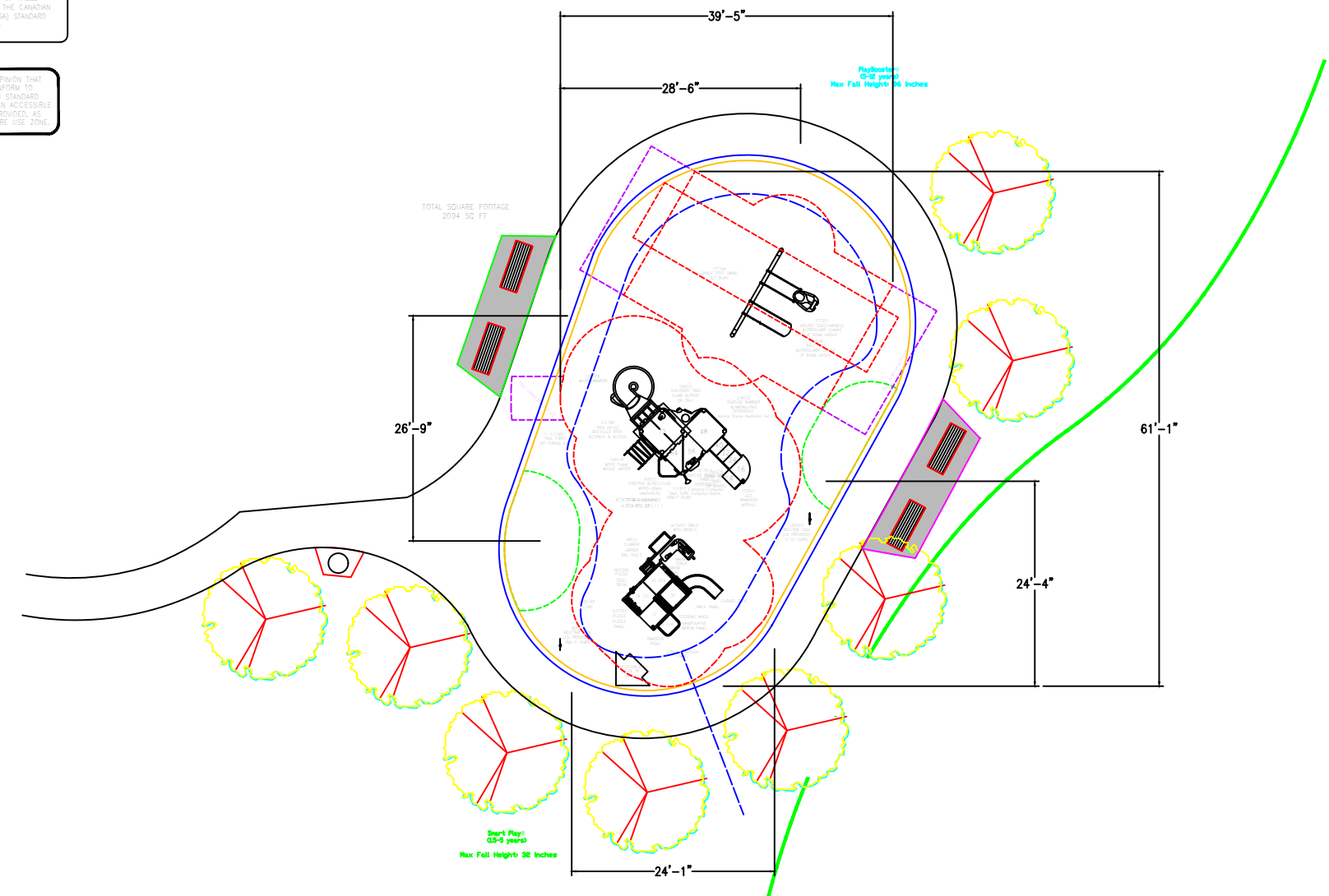


IT IS THE MANUFACTURERS OPINION AND INTENT THAT THE USE AND LAYOUT OF THESE COMPONENTS CONFORM WITH THE CANADIAN STANDARDS ASSOCIATION (CSA) STANDARD CAN/CSA-2614

IT IS THE MANUFACTURERS OPINION THAT THIS PLAY AREA SIZES CONFORM TO THE CSA 2614-14 ANNEX H STANDARD FOR ACCESSIBILITY, ASSUMING AN ACCESSIBLE PROTECTIVE SURFACING IS PROVIDED, AS INDICATED, OR WITHIN THE ENTIRE USE ZONE



landscape structures

IPMA CERTIFIED

The play components shown on this plan are IPMA certified. (Unless otherwise noted) The use and layout of these components conform to the Canadian Standards Association (CSA) Standard CAN/CSA-2614. To verify product certification, visit www.ipma.org

THIS PLAY AREA & PLAY EQUIPMENT IS DESIGNED FOR AGES 0-14 MONTHS UNLESS OTHERWISE NOTED ON PLAN

THIS CONCEPTUAL PLAN WAS BASED ON INFORMATION AVAILABLE TO US. PRIOR TO CONSTRUCTION, DETAILED SITE INFORMATION INCLUDING SITE DIMENSIONS, TOPOGRAPHY, EXISTING UTILITIES, SOIL CONDITIONS, AND DRAINAGE SOLUTIONS SHOULD BE OBTAINED, EVALUATED, AND UTILIZED IN THE FINAL DESIGN. PLEASE VERIFY ALL DIMENSIONS OF PLAY AREA, SIZE, ORIENTATION, AND LOCATION OF ALL EXISTING UTILITIES, EQUIPMENT AND SITE FURNISHINGS PRIOR TO ORDERING. SLICES SHOULD NOT FACE THE HOT AFTERNOON SUN.

CHOOSE A PROTECTIVE SURFACING MATERIAL THAT HAS A CRITICAL HEIGHT VALUE TO MEET THE MAXIMUM FALL HEIGHT FOR THE EQUIPMENT (REF. ASTM F1487 STANDARD CONSUMER SAFETY PERFORMANCE SPECIFICATION FOR PLAYGROUND EQUIPMENT FOR PUBLIC USE, SECTION 8 CURRENT REVISION). THE SUBSURFACE MUST BE WELL DRAINED. IF THE SOIL DOES NOT DRAIN NATURALLY, IT MUST BE TILED OR SLOPED 1/8" TO 1/4" PER FOOT TO A STORM SEWER OR A "FRENCH DRAIN".

DESIGNED BY:

COPYRIGHT: 9/8/21
LANDSCAPE STRUCTURES, INC.
401 7th STREET SOUTH - P.O. BOX 198
DELAND, MINNESOTA 55329
PH: 1-800-328-0030 FAX: 1-763-972-4091

Date	Previous Drawing #	Initials